

M3 Junction 9 Improvement

Scheme Number: TR010055

5.1 Consultation Report Appendix C - Non-Statutory Engagement

APFP Regulation 5(2)(q)

Planning Act 2008

**Infrastructure Planning (Applications: Prescribed Forms and
Procedure) Regulations 2009**

Volume 5

November 2022

Infrastructure Planning

Planning Act 2008

Infrastructure Planning (Applications: Prescribed Forms and Procedure) Regulations 2009

M3 Junction 9 Improvement Development Consent Order 202[x]

5.1 CONSULTATION REPORT APPENDIX C – NON-STATUTORY ENGAGEMENT
--

Regulation Number:	Regulation 5(2)(q)
Planning Inspectorate Scheme Reference:	TR010055
Application Document Reference:	5.1
BIM Document Reference:	HE551511-VFK-LSI-X_XXXX_XX-RP-LE-0004
Author:	M3 Junction 9 Improvement Project Team, National Highways

Version	Date	Status of Version
Rev 0	November 2022	Application Submission

Appendix C – Non-statutory engagement

- C.1. Scheme webpage updates**
- C.2. Project update letter 1 (2020 EIA scoping) – prescribed bodies and local authorities**
- C.3. Project update letter 1 (2020 EIA scoping) – landowners**
- C.4. Project update letter 1 (2020 EIA scoping) – locally elected representatives**
- C.5. Email to stakeholders regarding future consultation timescales**
- C.6. Project update letter 2 (2021 IAB refinements)**
- C.7. Email to stakeholders regarding the delay to DCO submission**
- C.8. Newsletter (2022 update)**

C.1. Scheme webpage updates

Webpage update 19.03.2020

19 March 2020

Proposal review

We consulted the public on our proposals for improving junction 9 of the M3 in summer 2019. The feedback received during that consultation showed there is widespread support for changes to the junction which will reduce congestion and improve traffic flow.

Following feedback from our 2018 consultation, we made improvements on the A34/A33 northbound weaving lengths. In further feedback received in the 2019 summer consultation events, some people told us that they continued to be worried that weaving lengths northward of the new junction along the A34 were not long enough.

We have taken that feedback into account, along with new information from additional traffic modelling, and are now reviewing our original proposals. By doing this we're making sure our final designs are for an even better performing junction.

Webpage update 01.04.2020

01 April 2020

Further public consultations

A full report on our 2019 design consultation will be available in spring 2020. We aim to go back out to public consultation with a further refined set of proposals later in 2020.

Webpage update 27.05.2021

27 May 2021

We're consulting on our proposals for this junction



Visit our virtual room and see our latest designs, watch a fly-through and get information on the measures we're taking to protect the surrounding environment. Then take part in our consultation by giving us your thoughts and leaving your feedback by filling in our questionnaire.

We're also hosting a series of webinars on particular topics. These are free and open to everyone:

Introduction to the M3 Junction 9 improvement scheme and next steps - Wednesday 2 June, 7.00pm – 8.00pm and Saturday 5 June 3.30pm – 4.30pm

Our proposals – what we are planning to do - Tuesday 8 June, 9.30am – 10.30am and Thursday 17 June 7.00pm – 8.00pm

Our effect on the environment: overview - Thursday 10 June 7.00pm – 8.00pm

Our effect on the environment: landscape, visual impacts, wildlife and habitats Monday 14 June 7.00pm – 8.00pm

Our effect on the environment: air quality and noise Tuesday 15 June 7.00pm – 8.00pm

You can register for an online webinar and submit your questions in advance by emailing M3junction9improvements@highwaysengland.co.uk or calling 0300 123 5000.

Speak to our team

Our team will be available Monday to Friday between midday to 7pm and Saturday between 10am to 4pm throughout the consultation period (27 May until 8 July) to discuss our proposals and to answer any questions you may have. You can book an appointment by emailing M3junction9improvements@highwaysengland.co.uk or call 0300 123 5000.

If you'd like a paper copy of any of the consultation documents, we can send these to you. Please note there may be a charge of up to £200 (including postage) for a paper copy of the Preliminary Environmental Information Report. All other consultation documents are available free of charge either in hard copy or digitally on a USB.

Please email: M3junction9improvements@highwaysengland.co.uk or call 0300 123 5000 to request a consultation document for delivery.

Webpage update 19.07.2021

19 July 2021

Consultation now closed

The consultation on our latest designs for junction 9 is now closed.

All responses will now be reviewed and addressed in a Public Consultation Summary Report, which will be available on this webpage later this year. We will then look to submit our planning application in early 2022, with a decision to be made by the Secretary of State in 2023.

If we're given permission to build the scheme we hope to start in 2023.

You can continue to view the latest designs, watch a fly-through and get information on the measures we're taking to protect the surrounding environment, by clicking on the [consultation](#) webpage.

Consultation webinar recordings

We hosted a series of webinars on particular topics between Wednesday 2 June and Thursday 17 June. Below are links to the recordings:

- [Webinar 1 – Introduction to the Proposed Scheme and Next Steps](#)
- [Webinar 2 – Our Proposals: What we are planning to do](#)
- [Webinar 3 – Our Effect on the Environment: An Overview](#)
- [Webinar 4 – Our Effect on the Environment: Landscape, Habitats and Wildlife](#)
- [Webinar 5 – Our Effect on the Environment: Air Quality and Noise](#)

If the subtitles do not automatically appear when you open the video, you can click on the 'Settings' icon (in the bottom right corner of the You-tube video screen), click on 'Subtitles', then select 'English'.

Webpage update 09.11.2021

09 November 2021

Consultation summary report now available

Following our community consultation on the project design that ran for six weeks from 27 May to 8 July 2021, we have written a [Consultation Summary Report](#).

As set out in 2021 [Statement of Community Consultation \(SoCC\)](#), the summary report contains the initial feedback and views from the community and its stakeholders all of which will help us to develop proposals further and understand any concerns about the project ahead of the DCO (Development Consent Order) application.

What happens now?

We will continue to develop our proposals further for the DCO submission, that will include a longer Consultation Report that summarises all the feedback we received and how it has informed the development of the scheme. Although the Secretary of State for Transport will decide whether to give permission for the scheme, local planning authorities such as Winchester City Council, Hampshire County Council and the South Downs National Park Authority have an important role to play in the process. We've already been talking to them about our proposals and will continue to engage before, during and after we submit the DCO to the government, via the Planning Inspectorate, which is likely to happen in early 2022.

The Planning Inspectorate will then examine the DCO application, with input from interested parties and statutory consultees. The examination period is a maximum of six months. Following the examination, the Planning Inspectorate will present its recommendation to the Secretary of State for Transport, who will then make the final decision on whether the DCO should be granted. We'll carry on working on our detailed design throughout this process and, assuming the DCO application is successful, we expect to start construction work by mid to late 2023.

Webpage update 22.12.2021

22 December 2021

Additional consultation after changes to land boundary

A statutory consultation was previously held between 27 May and 8 July 2021.

We listened to the feedback and the responses received, and as a result have developed our proposals further. This means a small amount of additional land is needed and we've had to change the Indicative Application Boundary.

Due to these changes, before submitting our Development Consent Order (DCO) application to the Secretary of State for Transport in 2022, we have had to consult with people that have a legal interest in the land that may be compulsory acquired by the Scheme. This consultation took place between 17 November and 22 December 2021.

The changes planned at M3 junction 9 are a critical part of our ongoing investment in the strategic road network and will improve journey times between south Hampshire and London via the M3 and the midlands and the north via the A34.

Further information about the Planning Act 2008 process and Development Consent Orders can be found on the Inspectorate's National Infrastructure Planning website: <http://infrastructure.planninginspectorate.gov.uk/>

Webpage update 09.05.2022

09 May 2022

Development Consent Order update

We're applying for development consent for improvements to junction 9 later than we originally announced. We're now looking to apply by Spring 2023 at the latest. This gives us time to consider how our design will tie-in with the existing road layout as opposed to a smart motorway layout.

Earlier this year, Government asked National Highways to pause all smart motorway projects that were in their early stages, including the M3 J9-14 project. The pause on M3 J9-14 means we must adapt the designs and materials we submit to the Planning Inspectorate as part of our application for consent to improve junction 9.

We're applying later than originally planned but this allows us time to adapt some parts of our design so that when we come to submit our application for consent to improve junction 9 to the Planning Inspectorate, it has all the information needed to fully consider our application.

We're working hard to gather and analyse additional data so we can submit our application as soon as possible, with next Spring being the latest.

We're committed to making sure our application is as comprehensive and complete as possible.

The delay in applying for consent to build means our date for starting construction will also be later

If you have any queries about this update, please contact us by phone on:0300 123 5000 or by email: m3j9improvements@nationalhighways.co.uk

Webpage update 21.06.2022

21 June 2022

Summer Newsletter

In our latest newsletter, we talk about progress on the scheme, why we're reviewing our designs and some of the environmental work we're doing.

We're continuing to refine our design and aim to apply for consent to make our improvements by Spring 2023 at the latest. We will update you when we've made our application and let you know the outcome from the Planning Inspectorate. We will also be in touch before then to keep you updated about the project.

[Read more and subscribe to our newsletter](#)

Webpage update 20.09.2022

20 September 2022

Key changes to our design

We've been reviewing the comments from our last consultation and have made some key design and environmental changes to our scheme.

You can view our current plans, see the changes and look at our proposed timeline in our new [online information portal](#).

Public engagement events

For anyone who would like to meet the team in person, we will be holding two public information events at Tesco Extra, Easton Lane, Winchester, SO23 7RS on:

- Sunday 25 September from 10am until 4pm
- Monday 26 September from 10am until 4pm

Free parking is available on site, we look forward to meeting you.

We'll continue to carry out surveys of local flora and fauna. We've recently completed dormice and bat surveys and have been looking for white clawed crayfish. It's important that we know about our neighbours so that we can protect their habitats and work around them.

You can still contact us in the usual way by emailing m3junction9improvements@nationalhighways.co.uk or calling 0300 123 5000.

The best way to stay up to date is by [signing up to receive our email updates](#).

C.2. Project update letter 1 (2020 EIA scoping) – prescribed bodies and local authorities

Our ref: HE551511
Your ref:

Highways England
Bridge House
1 Walnut Tree Close
Guildford
Surrey
GU1 4LZ

BY EMAIL ONLY

Direct Line: [REDACTED]
Email:
M3junction9Improvements@highwaysengland.co.uk

23 October 2020

Dear Sir/Madam,

M3 Junction 9 Improvement Scheme – project update

I am writing to you regarding the improvements planned at M3 Junction 9 (the “Proposed Scheme”), which are a critical part of Highways England’s ongoing investment in the strategic road network.

Highways England has recently submitted a request to the Planning Inspectorate for a Scoping Opinion under the Infrastructure Planning (Environmental Impact Assessment) Regulations 2017 (the ‘EIA Regulations’). Following this request, we expect the Planning Inspectorate to write to you to seek your views on the scope of our Environmental Impact Assessment (‘EIA’). You may be aware that Highways England carried out a previous scoping exercise in January 2019 and may have contributed to this process previously. This letter provides details about Highways England’s approach and reasons for conducting a ‘re-scoping’ exercise for the Proposed Scheme.

Overview of the Proposed Scheme

M3 Junction 9 is a key transport interchange which connects South Hampshire and the wider sub-region, with London via the M3 and the Midlands/North via the A34.

Significant volumes of traffic use the grade separated, partially signalised gyratory which acts as a bottleneck on the local highway network and causes significant delay throughout the day. Northbound and southbound movements between the M3 and A34 are particularly intensive, with downstream queues on the northbound off-slip of the M3 often resulting in safety concerns during peak periods.

To address this, the Proposed Scheme comprises the development and delivery of a scheme of works for increasing capacity, enhancing journey time reliability and supporting development. The Proposed Scheme includes widening of the M3 to form a four lane motorway, a smaller gyratory roundabout, new non-motorised user facilities, connector roads from the new free-flow links to the new gyratory roundabout and improved motorway slip roads. A package of environmental mitigation and enhancement measures is being progressed as the design advances and will be reported within the Environmental Statement.

Application for Development Consent

Due to the scale and nature of the Proposed Scheme, it is classified as a 'nationally significant infrastructure project' under the Planning Act 2008. Accordingly, Highways England will seek a Development Consent Order ('DCO') from the Secretary of State for Transport to authorise the construction, operation and maintenance of the Proposed Scheme. Applications for DCO are considered and authorised by the relevant Secretary of State, although the relevant Local Authorities and statutory bodies have a key defined role to play in the process. Highways England will be required under the EIA Regulations to undertake an EIA for the Proposed Scheme. Survey work to establish the environmental baseline of the site and its surroundings for the EIA has already commenced.

Previous EIA Scoping and Consultation

In January 2019, Highways England submitted a request to the Planning Inspectorate for a Scoping Opinion under the EIA Regulations. The Secretary of State adopted a Scoping Opinion in March 2019.

Following this, comments from relevant consultees were sought through a statutory consultation which ran from 2 July 2019 to 27 August 2019 (the 'summer 2019 consultation'). This consultation included a Preliminary Environmental Information Report, which set out Highways England's consideration of the environmental aspects of the project at that time.

Through the redesign process, it was identified that the changes made were significant enough to require a 're-scoping' exercise. This would allow the Secretary of State to once again consider the environmental matters that should be covered in the EIA for the revised scheme.

Highways England took the approach to conduct a 're-scoping' exercise principally because the Indicative Application Boundary has extended and brings in new areas of land that may be affected beyond that previously considered. Furthermore, the design changes have resulted in a new highways and roundabout configuration to that previously submitted for scoping and considered at the summer 2019 consultation.

In summary, key matters that have changed since the last consultation in summer 2019 are:

- The consideration of various areas to the east of the junction for environmental mitigation, areas of search for potential excess spoil management and temporary compounds. These have been included to seek to enhance the surroundings affected by construction, to mitigate effects of the scheme, and to facilitate the development of the Proposed Scheme. Note that some or all of these areas will be required. We have not made any final decisions on these areas and have commenced engagement with key bodies such as the South Downs National Park Authority and relevant local authorities to discuss these options in advance of our consultation next year;
- New highways and roundabout configuration to introduce greater movement between the M3 and A34;
- Other areas included following review by the future contractor that will build the scheme, so that they can construct the proposals in a safe, efficient and sensitive manner whilst keeping vehicles running through the junction.

Therefore, on 19th October 2020, Highways England submitted a request to the Planning Inspectorate for a Scoping Opinion under the EIA Regulations. Following this request, we expect the Planning Inspectorate to have written to you to seek your views on the scope of our EIA. The Planning Inspectorate will provide details of how to submit your comments, which should be submitted to them directly not Highways England. The Planning Inspectorate are responsible for setting any deadline for the receipt of your comments.

Highways England is committed to undertaking successful and valuable engagement with statutory consultees, and with the local community, ahead of submitting its application. As such, we will be writing to you again in the near future to provide details of future consultation which will occur in early 2021.

Further Information and Contact

Your comments on the scope of the EIA should be returned to the Planning Inspectorate. However, if you have any queries about the proposals for M3 Junction 9, then please do not hesitate to contact a member of the Project Team at:

M3junction9Improvements@highwaysengland.co.uk or by calling **0300 123 5000**.

Further information can be found can be found on the M3 Junction 9 Improvement Scheme webpage of Highways England's website at:

[REDACTED]

Yours faithfully,

[REDACTED]

[REDACTED]

Email: M3junction9Improvements@highwaysengland.co.uk

Phone: [REDACTED]

C.3. Project update letter 1 (2020 EIA scoping) – landowners

Our ref: HE551511
Your ref:

[Address]
[Address]
[Address]
[Address]
[Address]

Highways England
Bridge House
1 Walnut Tree Close
Guildford
Surrey
GU1 4LZ

Direct Line: [REDACTED]
Email: M3junction9improvements@highwaysengland.co.uk

16 October 2020

Dear [consultee],

M3 Junction 9 Improvement Scheme – update on a Proposed Application for Development Consent

I am writing to you in relation to the M3 Junction 9 Improvement scheme, to make you aware that we will shortly be submitting a request for a new Environmental Impact Assessment (EIA) 'Scoping Opinion' to the Planning Inspectorate. The Planning Inspectorate is the organisation that manages future planning applications like ours. We wanted to bring this to your attention because we believe that you are the owner, or act on behalf of the owner/estate, of land potentially affected by the M3 Junction 9 Improvement scheme.

As part of our ongoing contact with affected landowners/land interests, we may have previously contacted you about our proposals and potentially asked you to complete a 'Land Interest Questionnaire'. We have spent much of the last year updating our design in response to our public consultation in summer 2019. We will shortly restart contact with affected landowners, including you, to discuss the updated proposals.

The M3 Junction 9 is a key transport interchange which connects South Hampshire and the wider sub-region with London via the M3 and the Midlands/North via the A34. Our proposals are intended to reduce congestion and improve journey times by separating traffic travelling through the junction between the M3 to/from Southampton and the A34 to/from Newbury. Specifically, we are proposing to widen the M3, local to the junction, to create four lanes each way; reconfigure the existing main Junction 9 roundabout to make it more efficient; revise non-motorised users routes; and improve the motorway slip-roads.

The process of requesting an EIA Scoping Opinion is an entirely normal part of project development, and there is nothing specific that you need to do. Although the EIA Scoping Report is not a document that landowners/land interests are asked to comment on by the Planning Inspectorate, our submission will become a public document on the Planning Inspectorate's website shortly after it is submitted. We recognise that once the scoping request goes public, it may come to your attention that an area of your land is within the Indicative Application Boundary.

The 'Indicative Application Boundary' is the boundary that we are currently considering for our future application to the Planning Inspectorate. Therefore, we have enclosed with this letter an information sheet about our scoping request and a plan of our new Indicative Application Boundary.

After we receive the EIA Scoping Opinion from the Planning Inspectorate, we will start preparing for our next public consultation, which we anticipate holding in early 2021. We will write to you about that nearer the time. This will be an opportunity for you to share your views on the M3 Junction 9 Improvement scheme and the potential impacts the scheme may have on your land.

We will contact you again in the near future about the land required for the scheme. Should you have any comments or queries about this letter or the wider M3 Junction 9 Improvement scheme proposals, then please don't hesitate to contact me by emailing M3junction9Improvements@highwaysengland.co.uk or by calling **0300 123 5000**.

Yours [faithfully/sincerely],

[REDACTED]
[REDACTED]

Email: M3junction9Improvements@highwaysengland.co.uk

Phone: [REDACTED]

Enclosures:

- Information Sheet
- Indicative Land Use Plan

INFORMATION SHEET

What is a Scoping Opinion, and why do we need one?

A Scoping Opinion is an important document. It allows the Planning Inspectorate, on behalf of the Secretary of State for Transport, to tell us what they think should be included in the future Environmental Statement.

The Environmental Statement is a key document which needs to be submitted with our application for a Development Consent Order. It will report the outcomes of our ongoing Environmental Impact Assessment work.

Haven't you made a Scoping Request before / received a Scoping Opinion already?

Yes, this is our second request for a Scoping Opinion. We previously sought one in January 2019.

After the first Scoping Opinion was received, we held a full public consultation from 2 July 2019 to 27 August 2019. The consultation invited comments from all relevant bodies and people, including local authorities, landowners, local groups and the general public.

Feedback from the consultation showed that there was a high level of support for the proposals. However, some key comments were provided including; the length available for vehicles to change lanes when joining the A34 from Junction 9 and then heading on to the A33/Kingsworthy; the future traffic capacity of the scheme and the length of time that the construction works would take. Following the summer 2019 consultation, we've changed the design where possible, to try to resolve some of the issues raised.

The key design and boundary changes since the last consultation in summer 2019 are:

- The inclusion of several possible areas to the east of the junction for environmental works to respond to the effects of the scheme, potential areas for placing spare excavated material and temporary construction compounds. We have not made any final decisions on these areas and have begun discussions with key bodies such as the South Downs National Park Authority and Local Planning Authorities to discuss these options in advance of our main consultation next year;
- New highways and roundabout design to introduce greater movements between the M3 and A34;
- Other areas needed by the future contractor that we have appointed to build the scheme, so that they can construct the proposals in a safe, efficient and sensitive manner while keeping vehicles running through the junction.

Because these elements of the scheme have changed, we are seeking a new Scoping Opinion.

Included with this information sheet is a plan showing our updated boundary and an indication of how we expect the land within that boundary to be put to different uses. This may change but gives an indication of which areas would be used to construct the new junction and which would be used to undertake environmental works.

Publication of information

Our request for a new Scoping Opinion requires us to submit our Scoping Report, which will include the new Indicative Application Boundary, with the extra areas mentioned above and shown on the enclosed plan.

Once uploaded by the Planning Inspectorate, our request for a new Scoping Opinion will be available at the following internet link:

[REDACTED]

Please note that the timing of the upload of the document is outside of our control and may take several days to achieve by the Planning Inspectorate.

What will happen next?

You will be contacted directly during the remainder of 2020 to arrange for further discussion about our proposals.

We also plan to hold a full public consultation in the early part of 2021. This will cover all aspects of the proposed scheme and will allow people to provide any comments relating to the updated design and how we have responded to previous consultation.

Information on the next stage of consultation and how you can be involved will be made available to you in due course.

Further information

You can find more information about the scheme and sign up to alerts by visiting the M3 Junction 9 Improvement Scheme webpage at:

[REDACTED]

Our ref: HE551511
Your ref:

[Address]
[Address]
[Address]
[Address]
[Address]
[Address]

Highways England
Bridge House
1 Walnut Tree Close
Guildford
Surrey
GU1 4LZ

FAO:

Direct Line: [REDACTED]
Email: M3junction9improvements@highwaysengland.co.uk

16 October 2020

Dear **Sir/Madam**,

M3 Junction 9 Improvement Scheme

We are writing to you regarding the proposed improvements to the M3 junction 9, which are intended to reduce congestion and improve journey times. You may have been aware of this scheme as we've already held two consultations locally, one in 2018 and one in 2019.

As a direct result of feedback received during last year's consultation, we have updated our design, and this has meant that the footprint for the scheme (i.e. the amount of land needed) has changed slightly.

We now believe that the project may impact on land which you own or occupy. We wanted to make you aware of this, so you heard this news directly from us first.

As a landholder you have various rights defined in law, and we will ensure that you have plenty of opportunity to discuss any concerns you may have with us. Specifically, there will be a full public consultation in early 2021 on our revised proposals in the early part of next year, which you will be invited, and encouraged, to take part in.

In the meantime, we wanted to draw your attention to a document (our Scoping Report) that we will soon submit to the Planning Inspectorate. The Planning Inspectorate is the organisation which will handle our future planning application when it is submitted. Our Scoping Report will include a map of the scheme footprint, so the potential impact of the scheme on the land that you own or occupy may soon become common knowledge.

We have enclosed an information sheet explaining what the Scoping Report is, and why we need to submit one. We would like to take the opportunity to reassure you that this part of the process is normal, and confirm that no action is required by you at this stage. We will contact you again in the run up to the public consultation to explain how you can get involved and share your views on the scheme.

Finally, because we want to be sure that we have the right information about all the landholders affected by the scheme, we'll be in touch again soon to ask you to complete a 'land interest questionnaire'. If you have any comments or queries regarding this, or the wider M3 Junction 9 Improvement scheme proposals, then please don't hesitate to contact me by emailing M3junction9Improvements@highwaysengland.co.uk or by calling 0300 123 5000.

Yours faithfully/sincerely,

[Redacted signature]

[Redacted name]

[Redacted title]

Email: M3junction9Improvements@highwaysengland.co.uk

Phone: [Redacted]

Enclosures:

- Information Sheet
- Indicative Land Use Plan

INFORMATION SHEET

Background to the M3 Junction 9 Improvement scheme

The M3 Junction 9 is a key transport interchange which connects South Hampshire with London via the M3 and the Midlands/North via the A34.

Our proposals are intended to reduce congestion and improve journey times by separating traffic travelling through the junction between the M3 to/from Southampton and the A34 to/from Newbury.

We are proposing to widen the M3, local to the junction, to create four lanes each way; reconfigure the existing main junction 9 roundabout to make it more efficient; revise non-motorised users routes; and improve the motorway slip-roads.

What is a Scoping Opinion, and why do we need one?

A Scoping Opinion is an important document. It allows the Planning Inspectorate, on behalf of the Secretary of State for Transport, to tell us what they think should be included in the future Environmental Statement.

The Environmental Statement is a key document which needs to be submitted with our application for a Development Consent Order. It will report the outcomes of our ongoing Environmental Impact Assessment work.

This is the second request we've made for a Scoping Opinion. We previously sought one in January 2019.

After the first Scoping Opinion was received, we held a full public consultation from 2 July 2019 to 27 August 2019. The consultation invited comments from all relevant bodies and people, including local authorities, landowners, local groups and the general public. We may not have contacted you for comments before because at the time of the public consultation your land was not within the Indicative Application Boundary. The 'Indicative Application Boundary' is the boundary that we are currently considering for our future application to the Planning Inspectorate.

Feedback from the consultation showed that there was a high level of support for the proposals. However, some key comments were provided including; the length available for vehicles to change lanes when joining the A34 from Junction 9 and then heading on to the A33/Kingsworthy; the future traffic capacity of the scheme and the length of time that the construction works would take. Following the summer 2019 consultation, we've changed the design where possible, to try to resolve some of the issues raised.

The key design and boundary changes since the last consultation in summer 2019 are:

- The inclusion of several possible areas to the east of the junction for environmental works to respond to the effects of the scheme, potential areas for placing spare excavated material and temporary construction compounds. We have not made any final decisions on these areas and have begun discussions with key bodies such as the South Downs National Park Authority and Local Planning Authorities to discuss these options in advance of our main consultation next year;

- New highways and roundabout design to introduce greater movements between the M3 and A34;
- Other areas needed by the future contractor that we have appointed to build the scheme, so that they can construct the proposals in a safe, efficient and sensitive manner while keeping vehicles running through the junction.

Because these elements of the scheme have changed, we are seeking a new Scoping Opinion.

Included with this information sheet is a plan showing our updated boundary and an indication of how we expect the land within that boundary to be put to different uses. This may change but gives an indication of which areas would be used to construct the new junction and which would be used to undertake environmental works.

Publication of information

Our request for a new Scoping Opinion requires us to submit our Scoping Report, which will include the new Indicative Application Boundary, with the extra areas mentioned above and shown on the enclosed plan.

Once uploaded by the Planning Inspectorate, our request for a new Scoping Opinion will be available at the following internet link:

[REDACTED]

Please note that the timing of the upload of the document is outside of our control and may take several days to achieve by the Planning Inspectorate.

What will happen next?

You will be contacted directly during the remainder of 2020 to arrange for further discussion about our proposals.

We also plan to hold a full public consultation in the early part of 2021. This will cover all aspects of the proposed scheme and will allow people to provide any comments relating to the updated design and how we have responded to previous consultation.

Information on the next stage of consultation and how you can be involved will be made available to you in due course.

Useful links

- Planning inspectorate website: [REDACTED] [=1](#) (our request for a new Scoping Opinion will be available on this page in the coming weeks)
- M3 junction 9 web page: [REDACTED] (you can sign up for email alerts from this page if you wish to; they will tell you whenever the page is updated)

C.4. Project update letter 1 (2020 EIA scoping) – locally elected representatives

Our ref: HE551511
Your ref:

Highways England
Bridge House
1 Walnut Tree Close
Guildford
Surrey
GU1 4LZ

By email only

Direct Line: [REDACTED]
Email: M3junction9Improvements@highwaysengland.co.uk

13 October 2020

Dear Sir/Madam,

M3 Junction 9 Improvement Scheme – project update

I am writing to you in relation to the M3 Junction 9 Improvement scheme, to make you aware that as part of the move towards consultation in early 2021, we will shortly be submitting a request for a new 'Scoping Opinion' to the Planning Inspectorate. We wanted to bring this to your attention as occasionally, developments such as this can generate queries to the offices of elected officials such as yourself.

As a reminder, the M3 Junction 9 Improvement scheme is intended to reduce congestion and improve journeys by separating traffic travelling through the junction between the M3 to/from Southampton and the A34 to/from Newbury. Specifically, we are proposing to widen the M3, local to the junction, to create four lanes each way; reconfigure the existing main Junction 9 roundabout to make it more efficient; revise routes for walkers, cyclists and horseriders; and improve the motorway slip-roads.

The process of requesting an Environmental Impact Assessment (EIA) Scoping Opinion is an entirely normal part of project development, and there is nothing specific that you need to do.

You may want to note however, that our request for a new Scoping Opinion will be accompanied by a EIA Scoping Report, which will include an updated description of the proposed scheme and a new 'Indicative Application Boundary'. The new boundary will incorporate additional areas that were not included during the previous public consultation in summer 2019.

Although the Scoping Report is not a document that the public are consulted on by the Planning Inspectorate, our submission will become a public document on the Planning Inspectorate's website shortly after it is submitted. We recognise that once the scoping request goes public on the Planning Inspectorate website you may be contacted by your constituents. Therefore, enclosed with this letter are an information sheet about our scoping request and a plan of our updated proposed boundary.

After we receive the Scoping Opinion we will start preparing for our public consultation, which we anticipate holding in early 2021. We will write to you about that nearer the time.

Should you have any comments or queries regarding this letter or the wider M3 Junction 9 Improvement scheme proposals, then please don't hesitate to contact me by emailing M3junction9Improvements@highwaysengland.co.uk or by calling **0300 123 5000**.

Yours faithfully,

[REDACTED]
[REDACTED]

Email: M3junction9Improvements@highwaysengland.co.uk

Phone: [REDACTED]

Enclosures:

- Information Sheet
- Indicative Land Use Plan

INFORMATION SHEET

What is a Scoping Opinion, and why do we need one?

A Scoping Opinion is an important document. It allows the Planning Inspectorate, on behalf of the Secretary of State for Transport, to tell us what they think should be included in the future Environmental Statement.

The Environmental Statement is a key document which needs to be submitted with our application for a Development Consent Order. It will report the outcomes of our ongoing Environmental Impact Assessment work.

Haven't you made a Scoping Request before / received a Scoping Opinion already?

Yes, this is our second request for a Scoping Opinion. We previously sought one in January 2019.

After the first Scoping Opinion was received, we held a full public consultation from 2 July 2019 to 27 August 2019. The consultation invited comments from all relevant bodies and people, including local authorities, landowners, local groups and the general public.

Feedback from the consultation showed that there was a high level of support for the proposals. However, some key comments were provided including; the length available for vehicles to change lanes when joining the A34 from Junction 9 and then heading on to the A33/Kingsworthy; the future traffic capacity of the scheme and the length of time that the construction works would take. Following the summer 2019 consultation, we've changed the design where possible, to try to resolve some of the issues raised.

The key design and boundary changes since the last consultation in summer 2019 are:

- The inclusion of several possible areas to the east of the junction for environmental works to respond to the effects of the scheme, potential areas for placing spare excavated material and temporary construction compounds. We have not made any final decisions on these areas and have begun discussions with key bodies such as the South Downs National Park Authority and Local Planning Authorities to discuss these options in advance of our main consultation next year;
- New highways and roundabout design to introduce greater movements between the M3 and A34;
- Other areas needed by the future contractor that we have appointed to build the scheme, so that they can construct the proposals in a safe, efficient and sensitive manner while keeping vehicles running through the junction.

Because these elements of the scheme have changed, we are seeking a new Scoping Opinion.

Included with this information sheet is a plan showing our updated boundary and an indication of how we expect the land within that boundary to be put to different uses. This may change but gives an indication of which areas would be used to construct the new junction and which would be used to undertake environmental works.

Publication of information

Our request for a new Scoping Opinion requires us to submit our Scoping Report, which will include the new Indicative Application Boundary, with the extra areas mentioned above and shown on the enclosed plan.

Once uploaded by the Planning Inspectorate, our request for a new Scoping Opinion will be available at the following internet link:

[REDACTED]

Please note that the timing of the upload of the document is outside of our control and may take several days to achieve by the Planning Inspectorate.

What will happen next?

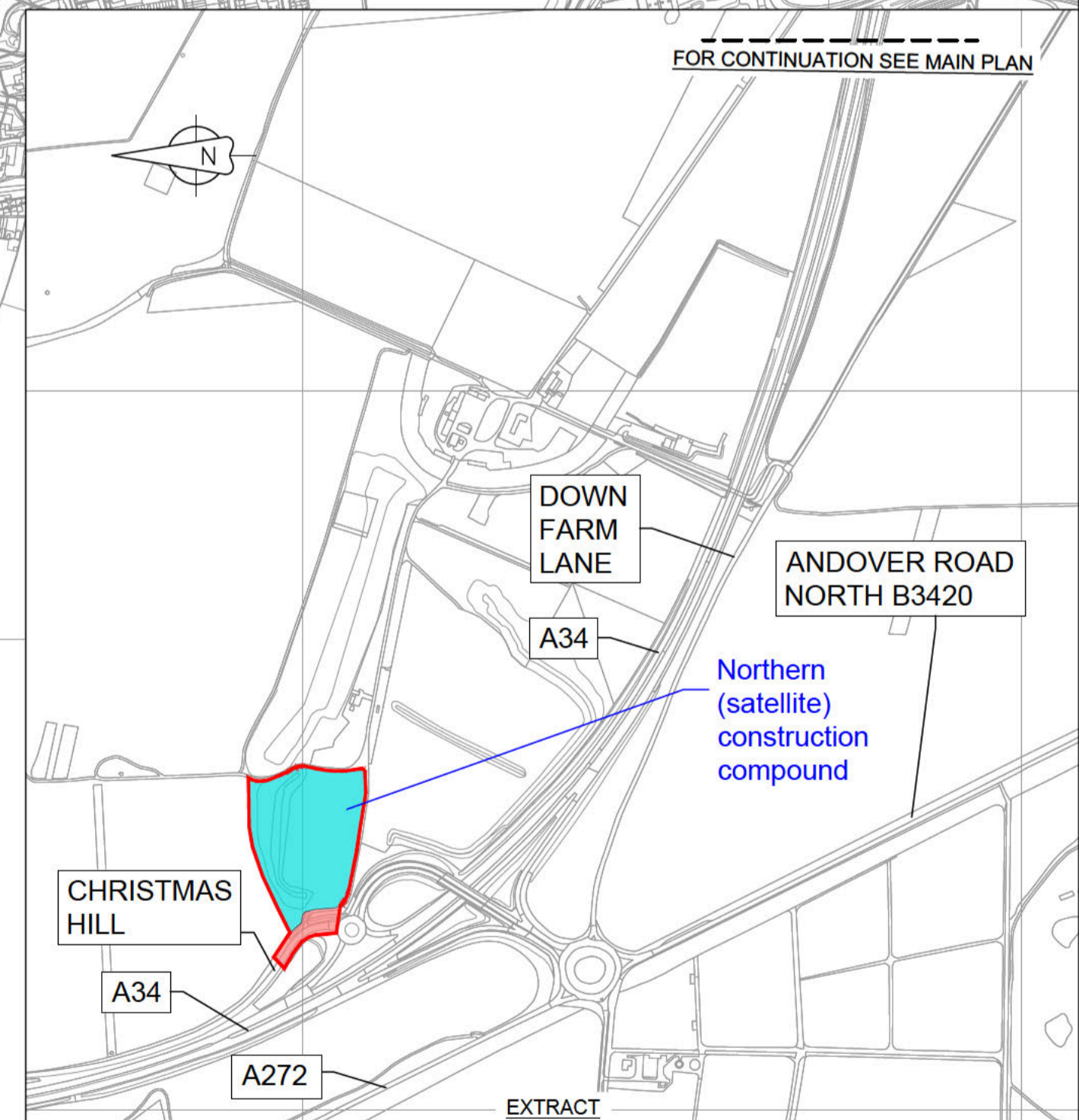
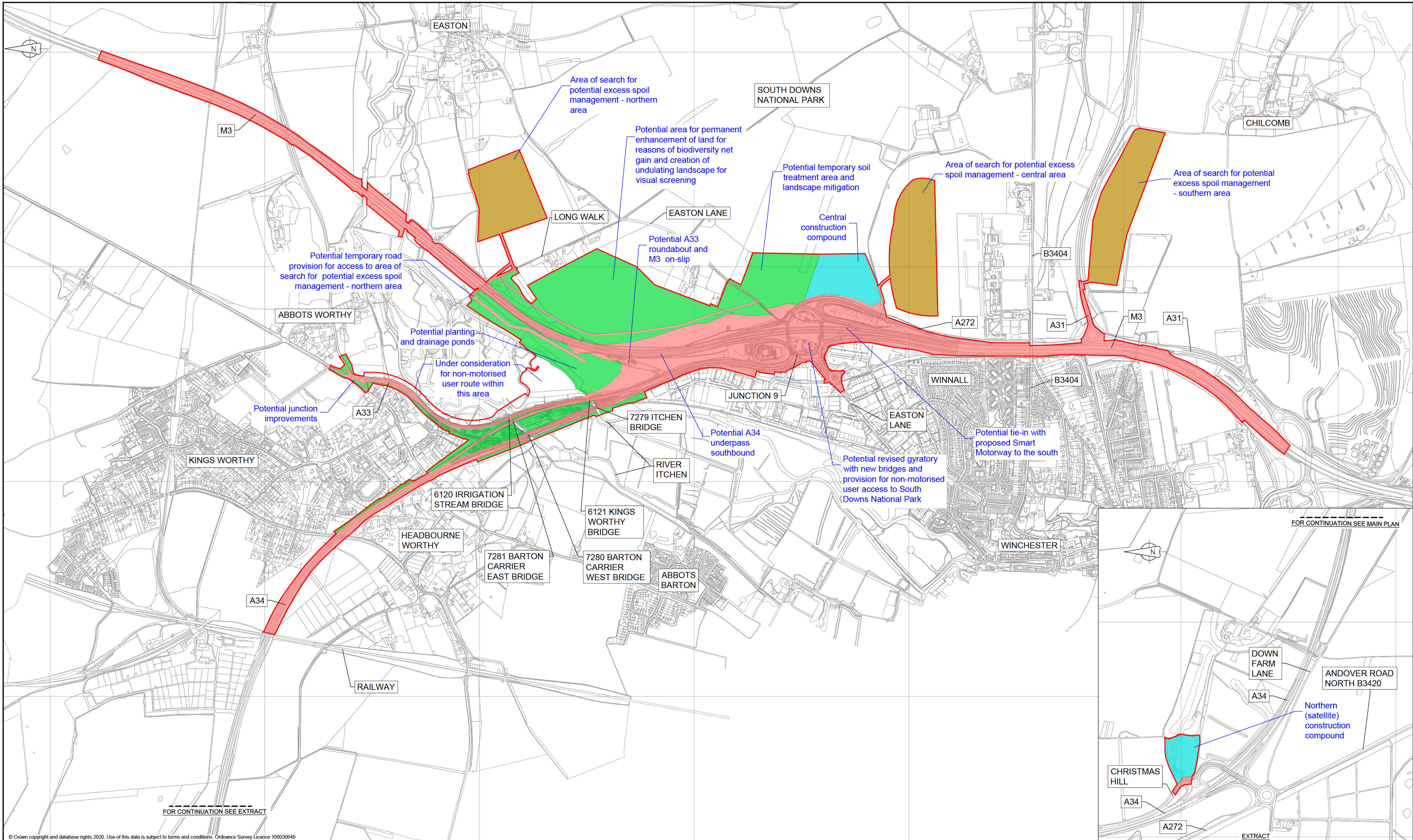
We plan to hold a full public consultation in the early part of 2021. This will cover all aspects of the proposed scheme and will allow people to provide any comments relating to the updated design and how we have responded to previous consultation.

Information on the next stage of consultation and how you can be involved will be made available to you in due course.

Further information

You can find more information about the scheme and sign up to alerts by visiting the M3 Junction 9 Improvement Scheme webpage at:

[REDACTED]



© Crown copyright and database rights 2020. Use of this data is subject to terms and conditions. Ordnance Survey Licence 100030649

KEY:

	ORDNANCE SURVEY MAPPING
	INDICATIVE APPLICATION BOUNDARY
	INDICATIVE PERMANENT/TEMPORARY HIGHWAY LAND TAKE INCLUDING PRINCIPAL ACCESS AND HAUL ROUTES
	INDICATIVE ENVIRONMENTAL MITIGATION AREAS
	INDICATIVE CONSTRUCTION COMPOUND AREAS
	AREAS OF SEARCH FOR POTENTIAL EXCESS SPOIL MANAGEMENT
	EXISTING PLACE OR ROAD NAME
	PROPOSED SCHEME DESCRIPTION

- NOTE:**
- ACCESS WILL BE PROVIDED THROUGH THE IAB FOR NON-MOTORISED USES, CROSSING THE M3 J9 ROUNDABOUT TO CONNECT WITH THE NATIONAL CYCLE ROUTE 23 TO THE EAST, AS WELL AS PROVIDING ACCESS TO THE NORTH.
 - THE BASE MAPPING SHOWN REPRESENTS THE EXISTING ROAD CONFIGURATION AS PROVIDED BY THE ORDNANCE SURVEY. IT DOES NOT PRESENT PROPOSED SCHEME DETAIL.
 - FIGURE 2.3 TO BE READ IN CONJUNCTION WITH THE ENVIRONMENTAL CONSTRAINTS SHOWN WITHIN FIGURE 2.2.

Project Status: **INFORMATION**

Project Title: M3 JUNCTION 9 IMPROVEMENT	
Drawing Title: INDICATIVE LAND USE PLAN	
Scale: NTS	Designed: N/A
Original Size: A1	Date: -
Drawn: LB	Checked: JM
Date: 18.09.20	Date: 18.09.20
Approved: AS	Date: 18.09.20
Project Ref. No: 48176	Revision: PO

FIGURE 2.3

C.5. Email to stakeholders regarding future consultation timescales

[REDACTED]

From: [REDACTED]
Sent: 18 February 2021 17:27
Subject: M3 junction 9 improvement - project update

Dear Sir/Madam,

Please see below a project update from Highways England in relation to the M3 junction 9 Improvement scheme:

In our most recent engagement with you, we mentioned our plans to hold a consultation on the above scheme early this year. However, we want to inform you that we're delaying our consultation to gather further survey evidence to inform our design. We must also avoid consulting at the same time as this spring's local council elections, so we'll be looking to take our design out to the public as soon as possible after they've taken place.

Highways England is committed to undertaking successful and valuable engagement with statutory consultees, and with the local community, ahead of submitting its application. As such, we will be writing to you again in the near future to provide details of our future consultation which will now occur after the local council elections.

If you have any queries about the proposals for M3 Junction 9, then please do not hesitate to contact us through the existing contact you have with the Project Team or by emailing M3junction9Improvements@highwaysengland.co.uk.

Kind regards

[REDACTED]
Environmental Planner

78 Cowcross Street
London
EC1M 6EJ

[REDACTED]
[REDACTED]



The content of this email is the confidential property of Stantec and should not be copied, modified, retransmitted, or used for any purpose except with Stantec's written authorization. If you are not the intended recipient, please delete all copies and notify us immediately.

C.6. Project update letter 2 (2021 IAB refinements)

Our ref: TR010055/DEC21/LET4

«Title» «First_Name» «Second_Name»
«Company_name»
«Add_1»
«Add_2»
«Add_3»
«Add_4»
«Add_5»
«Postcode»

FAO: «FAO»

National Highways
Bridge House
1 Walnut Tree Close
Guildford
Surrey
GU1 4LZ

Direct Line: [REDACTED]

Email:

M3Junction9Improvements@highwaysengland.co.uk

08 December 2021

Dear «Salutation»,

M3 Junction 9 Improvement Scheme Update on a proposed application for Development Consent

National Highways intends to apply to the Secretary of State for Transport for a Development Consent Order (DCO) for the M3 Junction 9 Improvement Scheme ('the Scheme'). The changes planned at M3 junction 9 are a critical part of our ongoing investment in the strategic road network and will improve journey times between south Hampshire and London via the M3 and the midlands and the north via the A34.

We previously identified your organisation as a statutory consultee for the purposes of section 42 of the Planning Act 2008 and invited you to provide comments on the Scheme as part of the statutory consultation undertaken between 27 May 2021 and 8 July 2021. We are now writing to inform you of refinements to the Scheme's Indicative Application Boundary (IAB) which have been made following the consultation and ongoing review of the design.

The changes have resulted in a small amount of additional land being added to the IAB and also the removal of land from the IAB that is no longer required for the Scheme. For your information we have enclosed two plans, one showing the updated IAB and one comparing the updated IAB with the IAB presented at the previous consultation ('the Comparison Plan').

The additional land now included in the IAB is shaded green on the enclosed Comparison Plan and comprises:

- (1) Provision for an additional area for landscaping in the immediate vicinity of the M3 corridor as a result of re-profiling the landscape.
- (2) Minor increase in the works area required for the construction of the sustainable drainage systems (SuDs) and attenuation features.

(3) Provision for signage and traffic management measures.

(4) Provision for required utilities diversions

In addition to the above, we have taken the opportunity to reduce the IAB at a number of locations. These changes are shaded orange on the enclosed Comparison Plan and comprise:

(1) Removal of the northern construction compound located adjacent to the A34/A282 roundabout near Christmas Hill.

(2) Removal of the northern, central and southern deposition areas.

(3) Reduction in the area required for the central construction compound.

(4) Removal of parts of the A34 Northbound and A34 Southbound and Cart and Horses Junction from the IAB as these are not part of the Scheme proposals.

We do not consider that these amendments materially change the information provided in the Preliminary Environmental Information Report (PEIR).

Further information about the Scheme and previous consultation can be found on the Scheme webpage: [REDACTED] Please note that some of the documents include information which is now out of date because of the changes made to the IAB but none of the changes materially affect the design or impacts of the Scheme and therefore it remains relevant to understanding what is proposed.

Further information about the Planning Act 2008 process and Development Consent Orders can be found on the Inspectorate's National Infrastructure Planning website:

[REDACTED]

Should you have any queries about this correspondence or the proposals, please do not hesitate to contact me using the details provided below.

Yours «Ending»

[REDACTED]

[REDACTED]

Email: M3Junction9Improvements@highwaysengland.co.uk

Phone: [REDACTED]

Enclosures:

- i. A paper copy of the updated Indicative Application Boundary Plan; and
- ii. A paper copy of the Indicative Application Boundary Comparison Plan

C.7. Email to stakeholders regarding the delay to DCO submission

Subject: M3J9 DCO Submission Delay

From: [REDACTED]
Sent: 09 May 2022 09:59
To: [REDACTED]
Subject: M3J9 DCO Submission Delay

Good morning [REDACTED]

There is a Project update on the submission we would like to share, please see below.

Earlier this year, Government asked National Highways to pause all smart motorway projects that were in their early stages, including the M3 J9-14 project. The pause means changes to the designs and materials we'll submit to the Planning Inspectorate when we apply for consent to improve M3 junction 9.

To give us the time we need to change some elements of our design – primarily around how the junction will tie back into the existing road – we've decided to apply for consent by spring next year at the latest – although we hope to submit our application by the end of this year. Either way we're committed to making sure our application is as detailed, comprehensive, and complete as possible so the Planning Inspectorate can make a fully informed decision about our proposals.

We can discuss the changes at our next meeting on 07/06, but in the meantime, please let me know if you have any questions about this update, thank you.

Kind regards,

[REDACTED]
Consultant – Major Infrastructure and Environment
[REDACTED]

[REDACTED]



The content of this email is the confidential property of Stantec and should not be copied, modified, retransmitted, or used for any purpose except with Stantec's written authorisation. If you are not the intended recipient, please delete all copies and notify us immediately.
Please consider the environment before printing this email.

C.8. Newsletter (2022 update)

M3 Junction 9 Improvements Update – Summer 2022

Welcome

It's been a while since we got in touch to update you on what's been happening.

In this edition, we talk about progress on the scheme, why we're reviewing our designs and some of the environmental work we're doing.

First, a quick recap

The feedback we received in May/July last year showed a broad level of support for improving the junction. The results of our community consultation exercise revealed that a large percentage of respondents favoured the proposed improvements, however many of you had questions about the environment, traffic flow, cycling provision and the impact on climate change.

Since then, we've been looking at [your feedback](#) in more detail to address these concerns and talking with Winchester City Council, Hampshire County Council and the South Downs National Park.

The pause on the [M3 J9-14 all lane running motorway scheme](#) has allowed us to further consider how the design will tie in with the existing road layout rather than a smart motorway layout.

So, what happens next?

We will continue to refine our design and aim to apply for consent to make our improvements by Spring 2023 at the latest.

We will update you when we've made our application and let you know the outcome from the Planning Inspectorate.

We will also be in touch before then to keep you updated about the project.

Summer surveys – out and about

We regularly carry out surveys to gather data about habitats, species and ground conditions which could impact our work.

The summer weather means our teams can get out and about to conduct environmental, engineering and ecological surveys.

Here's a bit more about what we do...

Arboricultural and land surveys

We want to understand as much as we can about the local flora and fauna as well as any areas of cultural heritage. The features of interest are mapped onto the scheme footprint to ensure these are retained or preserved.

These surveys are also combined with more specific ecology surveys and can highlight areas where there may be protected species, or particular 'pockets' of species, such as reptiles and amphibians.

Ecological surveys - Dormice



Hampshire has a thriving dormouse population and we've put measures in place to keep them and their habitat safe. The project team will apply for a licence from Natural England to move the dormice to safe alternative locations during the works.



We've installed over 200 dormouse nest tubes along hedgerows and in woodland across the site and will be returning to check back on these in the coming months.

Nesting birds

All nesting birds are protected during the breeding season, usually February to August. Any vegetation that needs to be removed must be done before this period.

Ecologists inspect suitable habitat areas to ensure there are no birds or chicks. However, other structures and equipment could potentially be home to a nesting bird, such as the underside of bridges or even construction equipment like dumpers or cranes.

Our teams check everything before work in a sensitive area starts. Under these circumstances, work is halted until the chicks have fledged and moved on.

Bats



Bats are protected in the UK and this protection extends to their roosts and feeding grounds. If works affect their habitat, then a licence is obtained from Natural England to minimise the impact and recreate suitable habitats.

We've conducted bat surveys to assess how the works will impact their habitat. These comprise of ground-level assessments of all trees and tree groups which need to be removed. Whenever a tree has been identified with 'moderate' or 'high' potential to support roosting bats, a follow up detailed at-height inspection to further inspect roost features will be completed in the future.

You might be interested in listening back at a [series of webinars](#) we recorded about our work and the environment – see our update from July 2021.

We'll be back in touch with updates on this scheme as we work towards getting our plans approved.

In the meantime, [sign up to our web page](#) where you can find information about all aspects of this project.